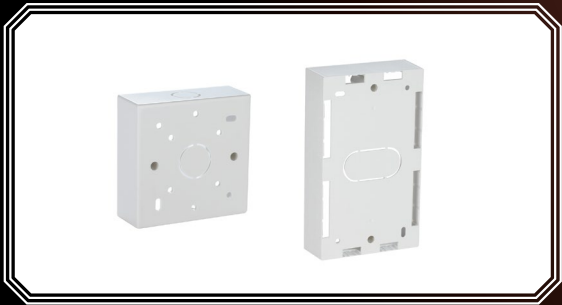


BACK BOXES



KEY FEATURES

- Single and dual gang configuration
- Suitable for flat and angled faceplates
- Breakaway cable entries

D-Link Backboxes are available suitable for both single, dual and quad Faceplates.

SPECIFICATIONS

For UK/EU Style Faceplate, White Colour
Box: ABS, with White Colour
Screw Nut: 3.5x5x6mm
Screw: 3.5x25mm

For French Style Faceplate, White Colour
Box: ABS, UL94-HB, with White Colour
Screw Nut: 5.5x6.5mm
Screw: M3.5X17.6x6.6 mm
Screw: M3.5X19.0X7.5mm

ORDERING INFORMATION

PART CODE	DESCRIPTION
NBB-011	86 x 86x 37mm Back Box for Single and Dual UK Faceplate
NBB-111	146 x 86 x 32mm Back Box for rectangular Quad Faceplate
NBB-211	80x 80 mm Back Box for Single and Dual French Faceplate