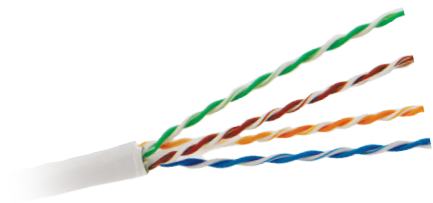


# CAT6A U/UTP LSZH CABLE



Enhanced performance cable for transmission of high speed data, digital and analogue voice and video (RGB) signals on LANs. Supports Gigabit Ethernet (10GbaseT) standard. Operates at bandwidth of 500MHz.

This cable well exceeds the requirements of TIA/EIA-568.2-D Category 6A ISO 11801-2 cot Class E. Exceeds all requirements for IEE 802.3at.

## SPECIFICATIONS

Category:	6A U/UTP Solid cable
Conductor:	23 AWG (Solid)
Conductor Diameter:	0.56 ± 0.005 mm
Conductor Metal:	Bare Copper
Insulation Material:	High Density Polyethylene
Sheath:	LSZH
Filler:	Special Filler
Cable Diameter:	7.3 ± 0.3 mm

## ORDERING INFORMATION

PART CODE	DESCRIPTION
NCB-6AUGRYR-500-LS	CAT6A U/UTP 23AWG LSZH Solid Cable: 500m/Roll, Grey Colour

## COLOUR CODE

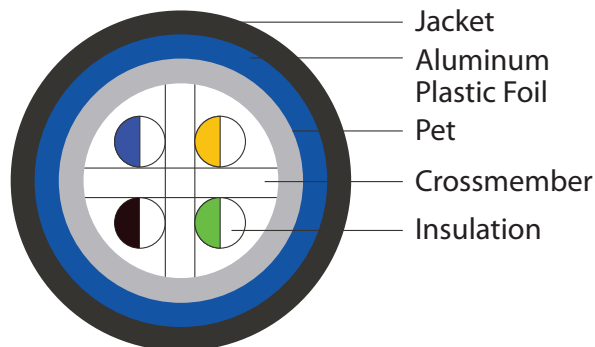
PAIR NO.	COLOUR
1-2	White/Orange Stripe and Orange
3-6	White/Green Stripe and Green
4-5	White/Blue Stripe and Blue
7-8	White/Brown Stripe and Brown

## KEY FEATURES

- Comply with Cat 6A specifications
- 4-pair unshielded twisted pair (U/UTP) cable
- 23 AWG solid copper conductor with a frequency of 500 MHz
- 6+1 Alien cross talk support
- HDPE/Foam PE insulation
- Cable OD: 7.3± 0.3 mm
- Packaged in MDF spool

## ELECTRICAL PROPERTIES

Conductor Resistance:	≤9.380hm/100m
Mutual Capacitance:	<5.6nF/100m
Resistance Unbalance:	5%Max
Delay Skew:	< 45ns
NVP%:	64% Nominal



# TRANSMISSION CHARACTERISTICS PER 100M

FREQUENCY MHZ	MAX ATTENUATION (DB/100M)	RL (DB)	NEXT (DB)	PSNEXT (DB)	ACRF (DB)	PSACRF (DB)
1	2.1	20.0	74.3	72.3	67.8	64.8
4	3.8	23.0	65.3	63.3	55.8	52.8
10	5.9	25.0	59.3	57.3	47.8	44.8
16	7.5	25.0	56.2	54.2	43.7	40.7
20	8.4	25.0	54.8	52.8	41.8	38.8
31.25	10.5	23.6	51.9	49.9	37.9	34.9
62.5	15	21.5	47.4	45.4	31.9	28.9
100	19.1	20.1	44.3	42.3	27.8	24.8
200	27.6	18.0	39.8	37.8	21.8	18.8
250	31.1	17.3	38.3	36.3	19.8	16.8
300	34.3	15.9	37.1	35.1	18.3	15.3
500	45.3	15.2	33.8	31.8	13.8	10.8

---

## CONNECTION SYSTEM

---

Compatible with all common systems according to ANSI/TIA-568-C.2  
& ISO/IEC 11801 Ed. 2.2

ISO/IEC 11801-1:2017 ANSI/TIA-568.2-D:2018 IEC 61156-5:2012 (Ed.2.1)  
EN 50173-1:2011;  
EN 50173-2:2007 including amendment A1:2010 EN 50288-10-1:2012

---

## FLAME PROPERTIES

---

Flammability Test – IEC 60332-1(CPR Class Eca)  
PH and Toxicity Index – IEC 60754 -1& 2  
Smoke Density – IEC 61034-1&-2

---

## PACKING

---

Available in MDF spool of guaranteed 500m length