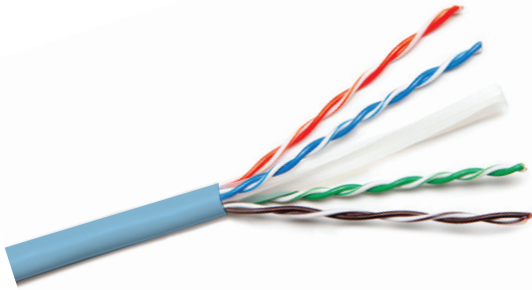


CAT6 UTP 23 AWG 4PPoE CABLE



Enhanced performance cable for transmission of high speed data, digital and analogue voice and video (RGB) signals on LANs. Supports Gigabit Ethernet (1000 baseT) standard. Operates at bandwidth of 250MHz. This cable well exceeds the requirements of TIA/EIA-568-C.2 and ISO/IEC 11801

KEY FEATURES

- Comply with Cat 6 unshielded twisted pair specifications
- PoE and PoE + compliance
- IEEE 802.3af Type -1 (Class 1, 2, 3), IEEE 802.3at Type -2 (Class 4), IEEE 802.3 bt Type 3 (Class 5, 6) PoE (45 & 60 W)
- IEEE 802.3 bt Type-4 90 W
- 23 AWG solid copper conductor for superior conductivity
- HDPE (OPTIMIZED MATERIAL TECH) Insulation
- LSZH Filler
- Special LSZH Jacket with enhanced heat dissipation properties
- Compliant with EIA/TIA standard

SPECIFICATIONS

Conductor:	23 AWG Solid bare Copper (4 pair)
Insulation:	Special Grade High Density Polyethylene
Pairs:	2 Insulated conductors twisted together
Sheath:	Special Grade LSZH
Filler:	LSZH
Cable Diameter:	6.0 mm nominal

ORDERING INFORMATION

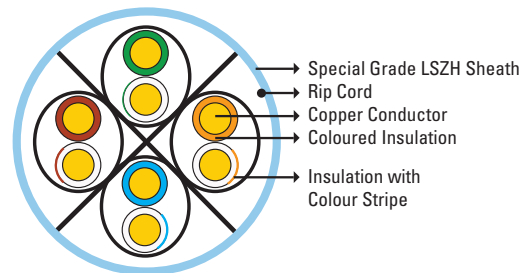
PART CODE	DESCRIPTION
NCB-C6UPLBUR-305-LS	Cat6 UTP 23 AWG LSZH 4PPoE Supported Solid Cable-305m/Roll - Light Blue

COLOUR CODE

PAIR NO.	COLOUR
1-2	White/Orange Stripe and Orange
3-6	White/Green Stripe and Green
4-5	White/Blue Stripe and Blue
7-8	White/Brown Stripe and Brown

ELECTRICAL PROPERTIES

Characteristic Impedance:	100±15Ω
Conductor Resistance:	≤ 9.38Ω/100m
Mutual Capacitance:	<5.6nF/100m
Resistance Unbalance:	5% Max
Capacitance Unbalance:	330pF/100m
Delay Skew:	< 45ns
NVP:	69%



TRANSMISSION CHARACTERISTICS

PERMANENT LINK SPECIFICATION TEST LIMITS

FREQUENCY MHZ	INSERTION LOSS (DB/100M)	RL (DB)	NEXT (DB)	PSNEXT (DB)	ELFEXT (DB)	PSELFEXT (DB)	ACR (DB)	PSACR (DB)
1	2.0	20.0	74.3	72.3	67.8	64.8	72.3	70.3
4	3.8	23.0	65.3	63.3	55.8	52.8	61.5	59.5
8	5.3	24.5	60.8	58.8	49.7	46.7	55.5	53.5
10	6.0	25.0	59.3	57.3	47.8	44.8	53.3	51.3
16	7.6	25.0	56.2	54.2	43.7	40.7	48.6	46.6
20	8.5	25.0	54.8	52.8	41.8	38.8	46.3	44.3
25	9.5	24.3	53.3	51.3	39.8	36.8	43.8	41.8
31.25	10.7	23.6	51.9	49.9	37.9	34.9	41.2	39.2
62.25	15.4	21.5	47.4	45.4	31.9	28.9	32.0	30.0
100	19.8	20.1	44.3	42.3	27.8	24.8	24.5	22.5
200	29.0	18.0	39.8	37.8	21.8	18.8	10.8	8.8
250	32.8	17.3	38.3	36.3	19.8	16.8	5.5	3.5

MECHANICAL PROPERTIES

Bending Radius:	< 4*Cable Diameter at -20°C ± 1°C
Pulling Force:	11.5 Kg
Operating Temperature Range:	-20°C to +70°C
Storage Temperature Range:	0°C to +50°C

PACKING

Available in easy-pull reel in a box of guaranteed 305m length

CONNECTION SYSTEM

Compatible with all common systems according to TIA/EIA 568-C.2 and ISO/IEC 11801 Class E