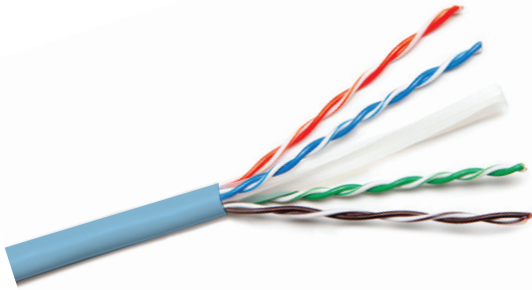


# CAT6 UTP 23 AWG LSZH CABLE



Enhanced performance cable for transmission of high speed data, digital and analogue voice and video (RGB) signals on LANs. Supports Gigabit Ethernet (1000 baseT) standard. Operates at bandwidth of 250MHz. This cable well exceeds the requirements of ANSI/TIA-568-C.2 and ISO/IEC 11801.

## KEY FEATURES

- Comply with Cat 6 specifications
- 4-pair unshielded twisted pair (UTP) cable
- 23 AWG solid copper conductor for superior conductivity
- PE insulation
- PE central cross
- LSZH Jacket
- Verified compliant with EIA/TIA standards by ETL & UL-listed
- Packaged in an easy-to-pull reel in a box for easier installation

## SPECIFICATIONS

Conductor:	23 AWG Solid bare Copper
Insulation:	High Density Polyethylene
Pairs:	2 Insulated conductors twisted together
Separator:	Polyolefin
Sheath:	LSZH
Cable Diameter:	6.0± 0.2 mm

## ELECTRICAL PROPERTIES

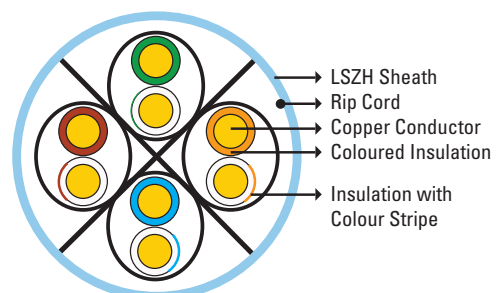
Characteristic Impedance:	100±15Ω
Conductor Resistance:	≤ 9.38Ω/100m
Mutual Capacitance:	<5.6nF/100m
Resistance Unbalance:	5% Max
Capacitance Unbalance:	330pF/100m
Delay Skew:	< 45ns

## ORDERING INFORMATION

PART CODE	DESCRIPTION
NCB-C6ULBUR-305-LS	Cat6 UTP 23 AWG LSZH Solid Cable-305m/Roll - Light Blue Colour
NCB-C6UGRYR-305-LS	Cat6 UTP 23 AWG LSZH Solid Cable-305m/Roll - Grey Colour

## COLOUR CODE

PAIR NO.	COLOUR
1-2	White/Orange Stripe and Orange
3-6	White/Green Stripe and Green
4-5	White/Blue Stripe and Blue
7-8	White/Brown Stripe and Brown



# TRANSMISSION CHARACTERISTICS PER 90M

FREQUENCY MHZ	INSERTION LOSS (DB/100M)	NEXT (DB)	RL (DB)	PSNEXT (DB)	ACR-F (DB)	PS ACR-F (DB)
1	19	65	19.1	62	64.2	61.2
4	3.5	64.1	21	61.8	52.1	49.1
8	5	59.4	21	57	46.1	43.1
10	5.5	57.8	21	55.5	44.2	41.2
16	7	54.6	20	52.2	40.1	37.1
20	7.9	53.1	19.5	50.7	38.2	35.2
25	8.9	51.5	19	49.1	36.2	33.2
31.25	10	50	18.5	47.5	34.3	31.3
62.5	14.4	45.1	16	42.7	28.3	25.3
100	18.6	41.8	14	39.3	24.2	21.2
200	27.4	36.9	11	34.3	18.2	15.2
250	31.1	35.3	10	32.7	16.2	13.2

## MECHANICAL PROPERTIES

Bending Radius:	< 4*Cable Diameter at -20°C ± 1°C
Pulling Force:	11.5 Kg
Temperature Range	
Installation:	0° to + 50°C
Operation:	-20° to +70°C

## PACKING

Available in Reel In Box of 305 Meters.

## FLAME PROPERTIES

Flammability Test – IEC 60332-1  
Acid Gas Emission Test – IEC 60754-1  
Smoke Density Test – IEC 61034-1

## CONNECTION SYSTEM

Compatible with all common systems according to TIA/EIA 568-C.2  
and ISO/IEC 11801 Class E